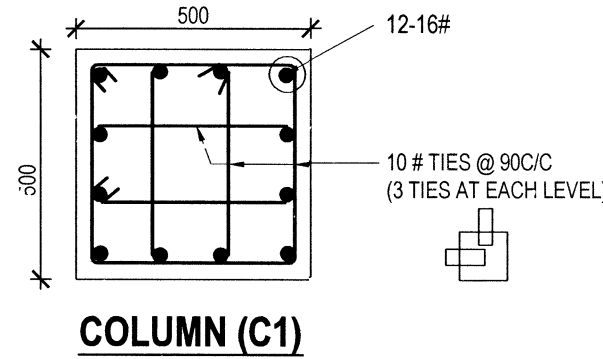
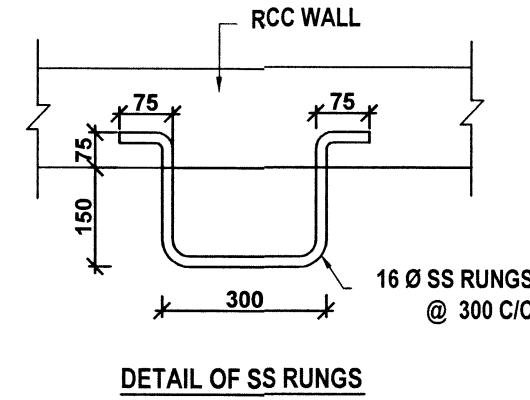
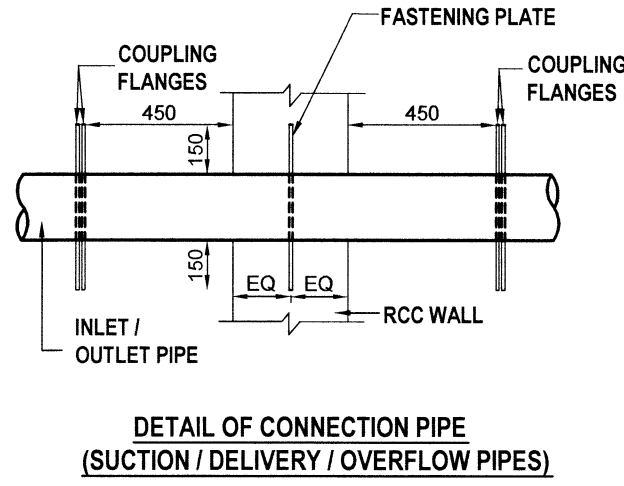


SCHEDULE OF RCC PILE CAPS																	
Sl. No.	TYPE OF PILE CAP	PILE			SIZE OF PILE CAP			R E I N F O R C E M E N T I N P I L E C A P S									
		TYPE	DIA	No. OF PILES	LENGTH	WIDTH	DEPTH	BOTTOM BARS ALONG WIDTH 'B'		TOP BARS ALONG WIDTH 'B'		BOTTOM BARS ALONG LENGTH 'L'		TOP BARS ALONG LENGTH 'L'		BURSTING HORIZONTAL BARS	
								'L'	'B'	'D'	Nos	DIA #	Nos	DIA #	Nos	DIA #	Nos
1.	PC-1	P-1	450	21	13210	6000	800	102	16	102	12	48	16	48	12	7	12

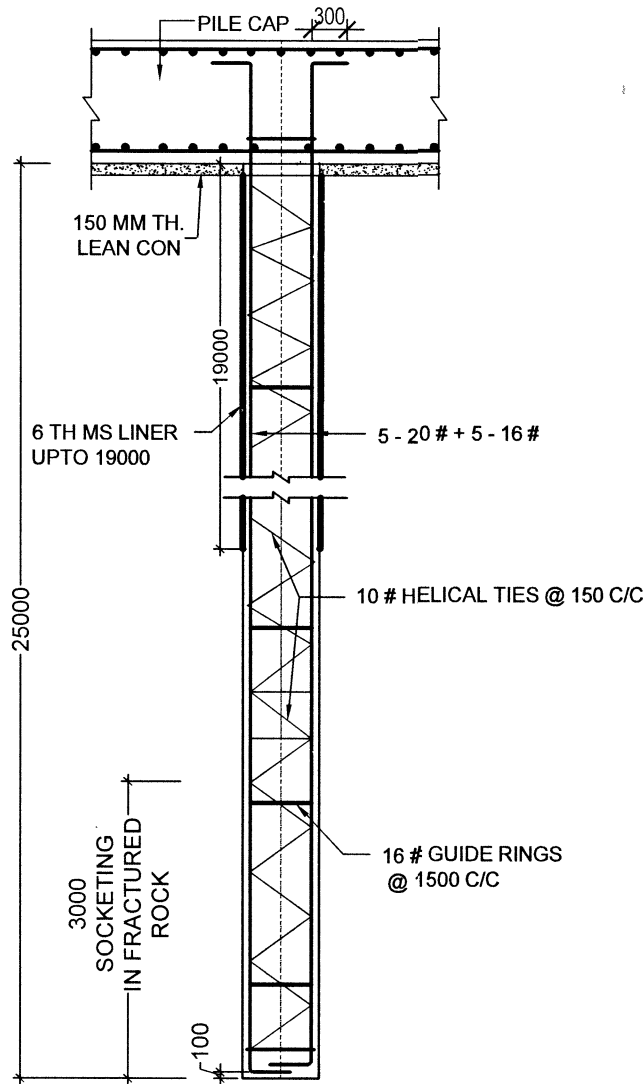


COLUMN (C1)

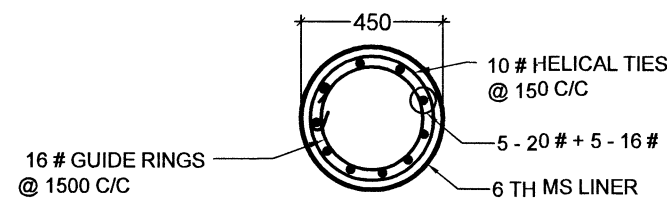
SAFE LOAD CARRYING CAPACITY OF PILES						
SL NO.	TYPE OF PILE	DIA	DEPTH	SAFE LOAD CARRYING CAPACITY (IN TONS)		
				COMPRESSION	LATERAL THRUST	UPLIFT
01	P1	450	25000	73.72	1.32	45.25



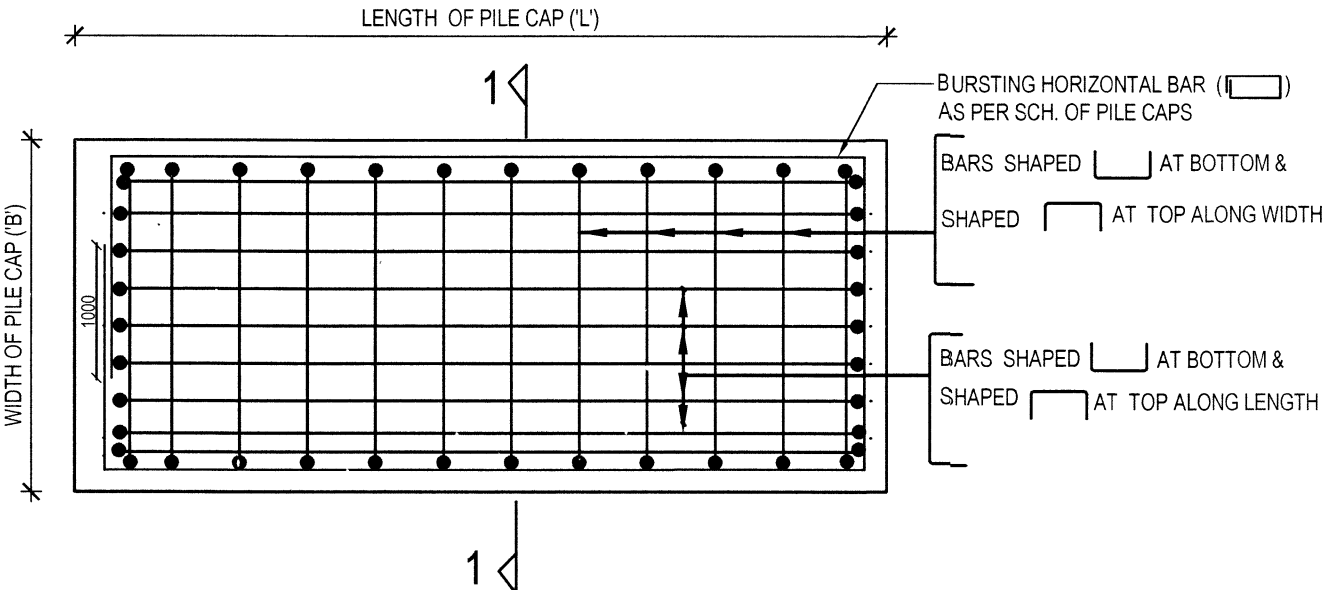
SCHEDULE OF LINTEL		
CLEAR SPAN IN MM	TYPICAL SECTION	END BEARING IN MM
0 TO 900		200
901 TO 1500		250
1501 TO 2100		275



SECTION THROUGH PILE P-1

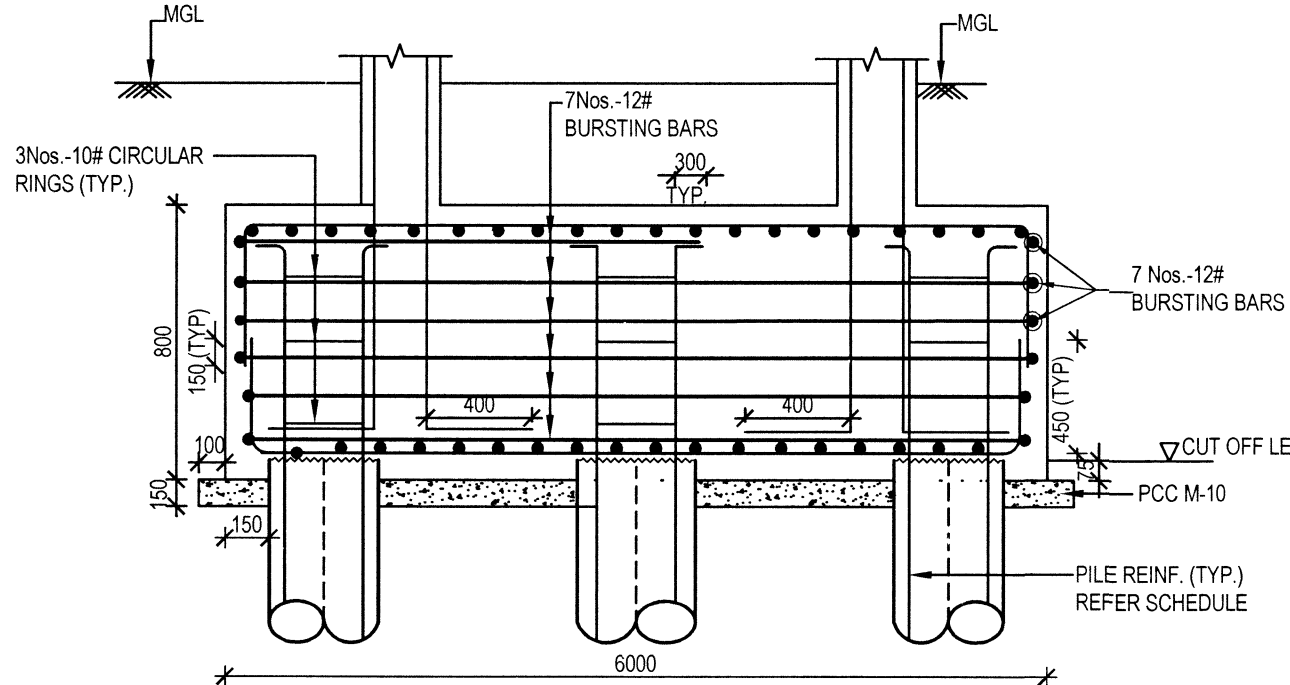


DETAIL OF PILE (P-1)

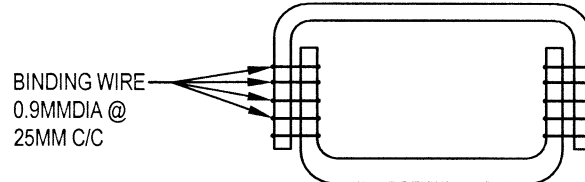


**TYPICAL PLAN OF (REC.SHAPE) PILE CAP SHOWING
REINFORCEMENT DETAIL (FOR DIA & NO. OF BARS REFER SCH.)**

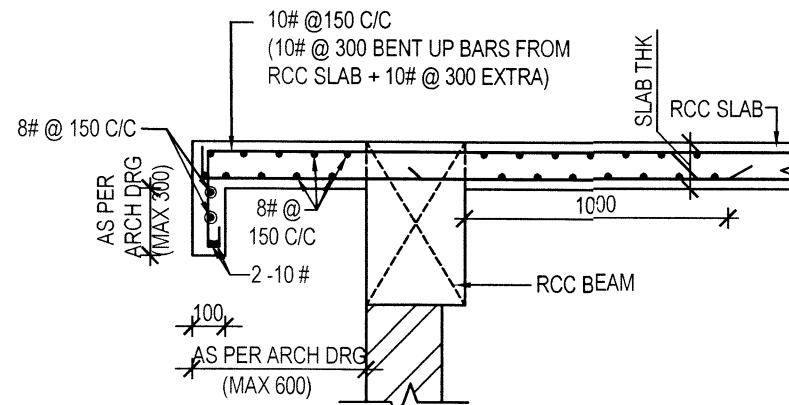
NOTE:- SPLICED LENGTH OF HORIZONTAL BURSTING BAR SHALL BE 1000 AND SHALL BE INTERMITTENT WELDED AT CONTINUOUS INTERVAL IN ADDITION TO BINDING WITH BINDING WIRE.



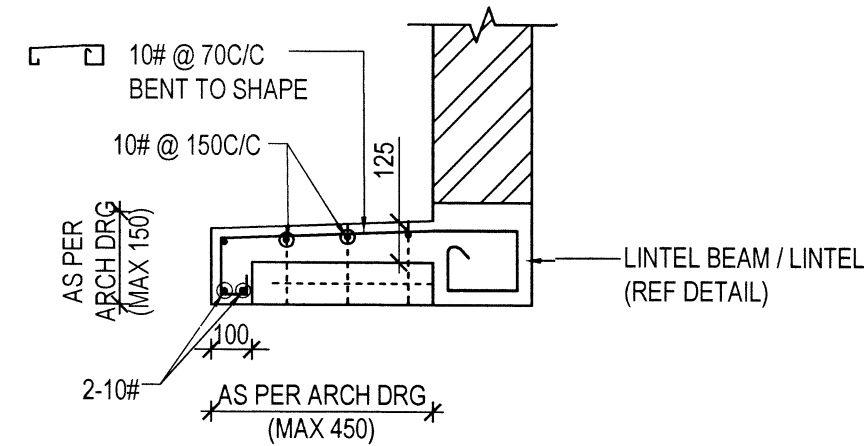
X-SECTION OF PC-1 AT 1-1



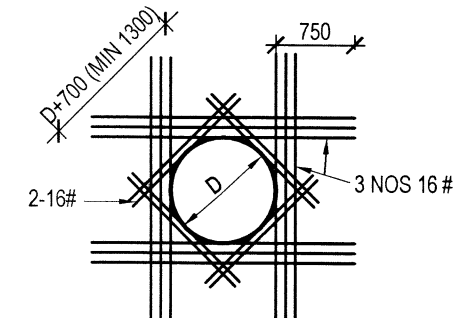
TYP DETAILS OF BINDING WIRE



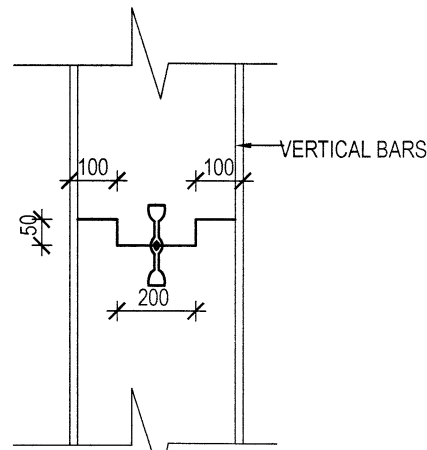
DETAIL OF ROOF PROJECTION WITH DROP



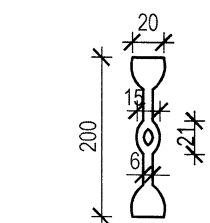
TYP. DETAIL OF RCC CHAJJA 450 WIDE



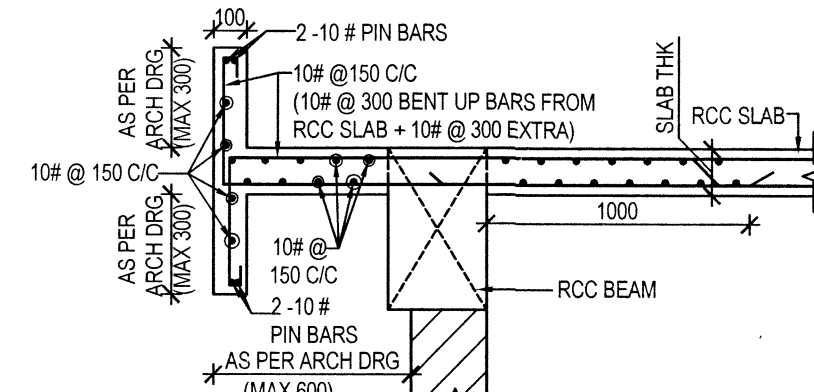
**ADDL REINFORCEMENT DETAIL AROUND INLET PIPE AT
BOTH FACES OF WALL**



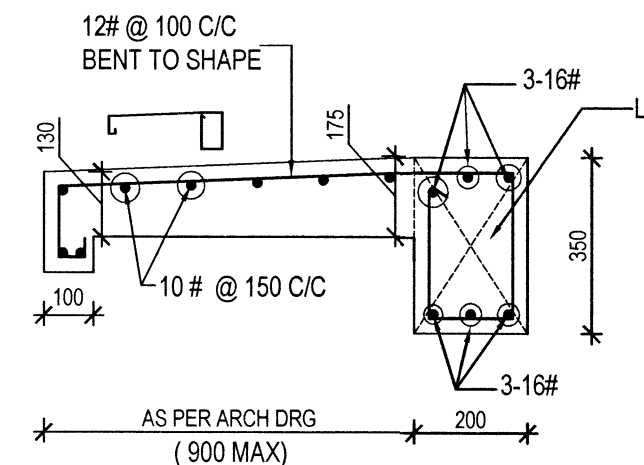
TYPICAL CONSTRUCTION JOINT IN RCC WALL



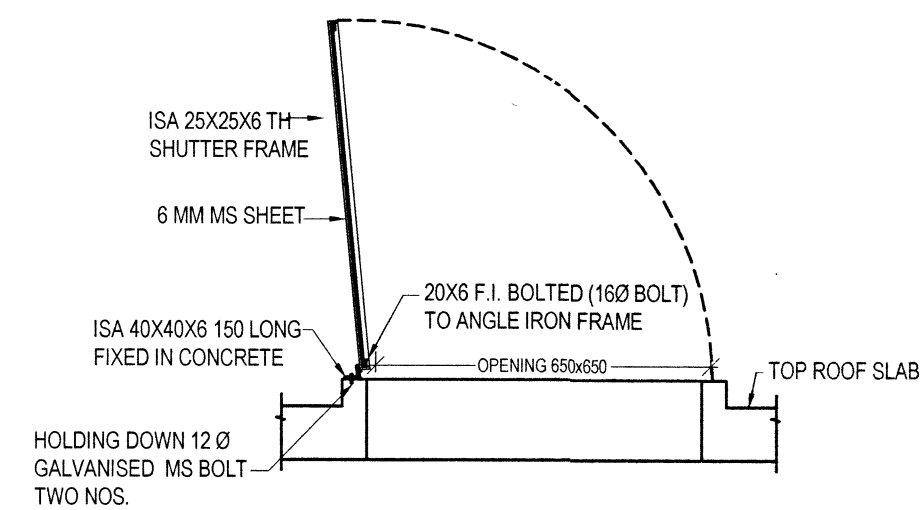
DETAIL OF PVC WATER BAR



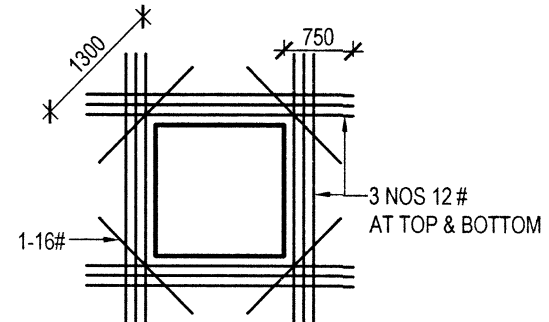
DETAIL OF ROOF PROJECTION WITH RCC PARAPET AND DROP



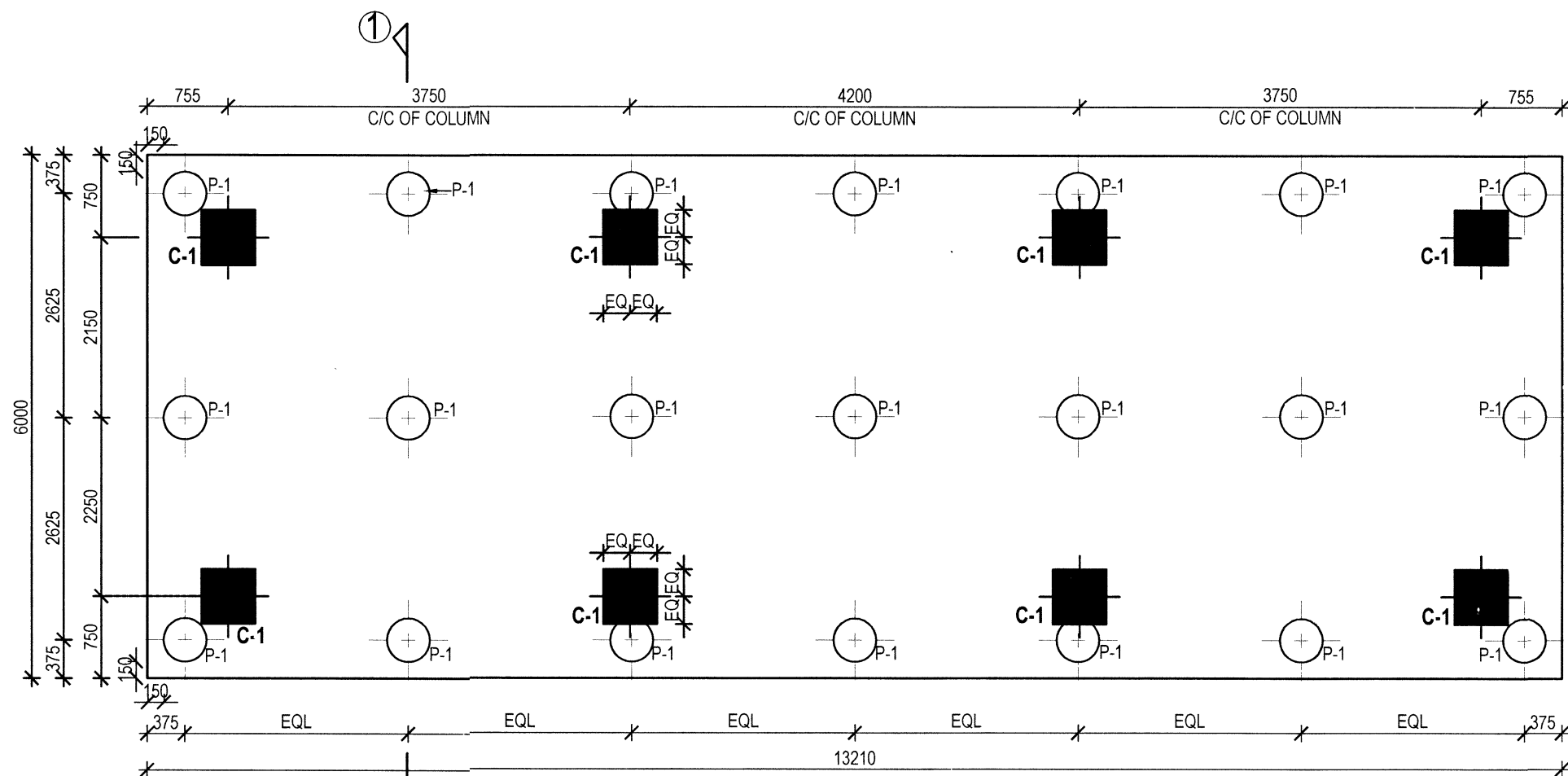
DETAIL OF RCC CHAJJA 900 WIDE



SECTIONAL ELEVATION OF MANHOLE COVER



**REINFORCEMENT DETAIL AT TOP & BOTTOM
AROUND MANHOLE
(MANHOLE OPENING SIZE 650 X 650)**



PILE FOUNDATION PLAN (PILE CAP-PC-1)

SL No.	DATE	DESCRIPTIONS	INITIAL
REVISIONS			


REVISIONS

PROVN OF DEFICIENT 287 SINGLE INLIVING ACCN
ASSOCIATED FACILITIES FOR DSC AT NAVAL
DOCKYARD, VISAKHAPATNAM (BD NO AMWP 46/ 2020)

SUMP CUM PUMP HOUSE

RCC DETAILS OF PILE FOUNDATION, RCC COLUMN AND OTHER DETAILS.

DATE	21 JUN 2022	CHIEF ENGINEER (NAVY) VISAKHAPATNAM ZONE	SHT No.
DRN	SACHITA		3 /3
CKD			
SCALE	AS SHOWN	REF DRG NO: CEVZ/2022/WD/2110(S) S-PH	


SRINIVAS NALLA, IDSE
CE (NF)
DIR (DESIGN)
FOR CHIEF ENGINEER